



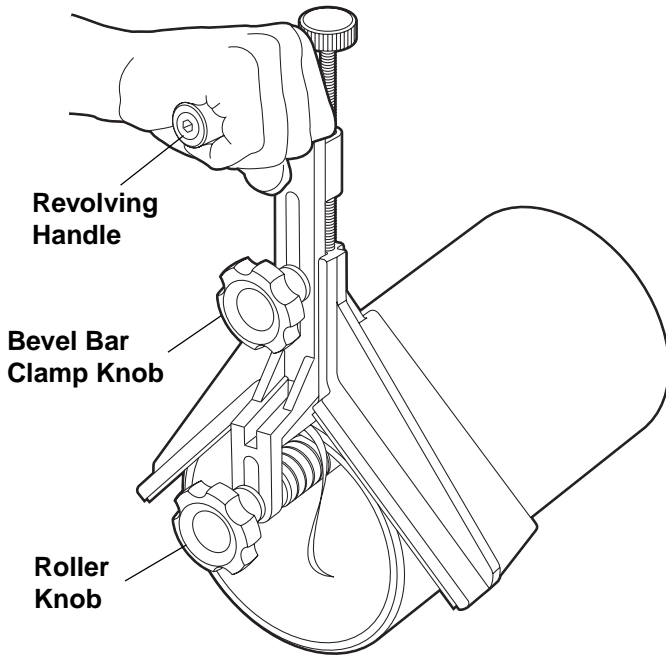
PIPE TOOLS & VISES  
SINCE 1896

# BT1 & BT2 Plastic Pipe Bevelers

Bevelers are hand-operated in a clockwise rotation to create a 3/4" wide bevel at 15°.

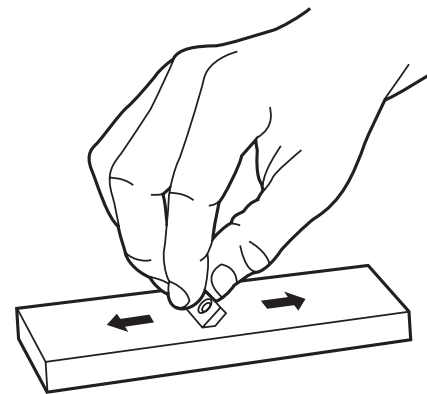
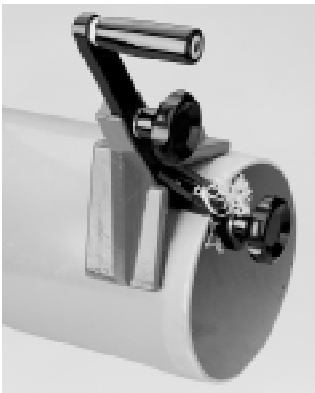
## OPERATING INSTRUCTIONS

To be able to use Reed's BT1 or BT2 effectively, it is essential to first clamp the pipe down snug so it doesn't turn. Reed offers Chain Vises that are suitable for the task.



1. Prepare pipe end by cutting it square.
2. Adjust roller so as to provide adequate gap for the wall thickness to be beveled. Tighten ROLLER KNOB firmly. The roller knob is located at the bottom of the beveler. Don't make the gap between the blade and roller more than 1/4". (Make this adjustment first.)
3. Loosen BEVEL BAR CLAMP KNOB. It is located at the top of the beveler. Place tool on pipe with the pipe end between and snug against the roller and bevel blades.
4. Tighten "V" guide down while pulling up on REVOLVING HANDLE (for BT2 use the chrome knob near the revolving handle) until the tool feels snug on the pipe. Firmly tighten bevel bar clamp knob.
5. Bevel pipe by rotating tool in a smooth, continuous clockwise motion. Proper operation requires inward pressure on the revolving handle to feed the bevel blades. Bevel to half the wall thickness or check pipe manufacturer's specifications.
6. Keep blade sharp for best results. (See blade care.) After numerous sharpenings, it will be necessary to replace the BT1B blade.

603 - #50186



### BEVELERS

Catalog No.	Item Code	Pipe Capacity	
BT1	04395	1 1/2 - 8 in	40 - 200 mm
BT2	04398	1 1/2 - 12 in	40 - 300 mm

### CHAIN VISES

Catalog No.	Item Code	Pipe Capacity	
CV2	02510	1/8 - 2 1/2 in	10 - 75 mm
CV4	02520	1/8 - 4 in	10 - 114 mm
CV5	02530	1/8 - 5 in	10 - 141 mm
CV6	02540	1/4 - 6 in	14 - 168 mm
CV8	02550	1/2 - 8 in	21 - 219 mm
CV12	02560	3/4 - 12 in	25 - 335 mm

### BLADE CARE

To sharpen the cutting blade:

Using a double sharpening stone with flat faces, hold the blade as shown and move back and forth as indicated by the arrows. Work first on the coarse side and then on the fine side until a sharp edge is restored. If the blade is chipped or too worn for sharpening, a new blade is needed.

### REPLACEMENT BLADES

Catalog No.	Item Code	Description
BT1SB	94386	Support Blade for BT1 and BT2
BT1B	94388	Cutting Blade for BT1 and BT2

Reed Manufacturing Company  
1425 West 8th St.  
Erie, PA 16502 USA



Phone: 800-666-3691 or 814-452-3691  
Fax: 800-456-1697 or 814-455-1697  
www.reedmfgco.com

603 - #50186